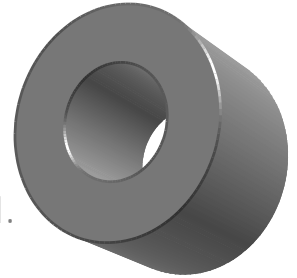


# Don't Stack Anymore with

## • Special Height Sendust

RoHs  
Compliant

- Sendust 60 $\mu$ , 125  $\mu$  are focused
- Tolerance is +/-8%, like normal height
- Customized Special Height is possible
- All electrical performance is same as normal.



### ❖ SPECIFICATION

Part No.	Dimension After Finish (Before Finish)			Magnetic Dimension		Window Area (cm <sup>2</sup> )	A <sub>L</sub> Value [nH/T <sup>2</sup> ]
	OD(mm)	ID(mm)	HT(mm)	ℓ(cm)	A(cm <sup>2</sup> )		
CS229060E15.2	23.62	13.39	16	5.67	0.662	1.41	86
CS229125E15.2	(22.86)	13.97	15.2)				180
CS270060E18	27.7	14.1	18.8	6.35	1.053	1.56	120
CS270125E18	(26.92)	14.73	18.0)				253
CS330060E21.3	33.83	19.30	22.1	8.15	1.344	2.93	122
CS330125E21.3	(33.02)	19.94	21.3)				254
CS343060E17.8	35.2	22.6	18.6	8.95	0.908	4.01	76
CS343125E17.8	(34.29)	23.37	17.8)				158
CS358060E21	36.7	21.5	21.8	8.98	1.356	3.64	112
CS358125E21	(35.81)	22.35	21.0)				234
CS468060E30.5	47.6	27.9	31.3	11.63	2.680	6.11	172
CS468125E30.5	(46.74)	28.7	30.5)				356
CS508060E27	51.7	30.9	27.8	12.73	2.500	7.50	146
CS508125E27	(50.8)	31.75	27)				304
CS571060E30.5	58.0	25.6	31.3	12.5	4.580	5.14	276
CS571125E30.5	(57.15)	26.39	30.5)				574
CS572060E28	58.0	34.7	28.8	14.3	2.888	9.48	150
CS572125E28	(57.15)	35.56	28)				312
CS777060E25.4	78.9	48.0	26.2	20	3.540	17.99	136
	(77.8)	49.23	25.4)				